

SPECIFICATION FOR APPROVAL



Customer Name : _____

Product Name : *LLT-S6060WAQ (595)* _____

Issue Date : _____

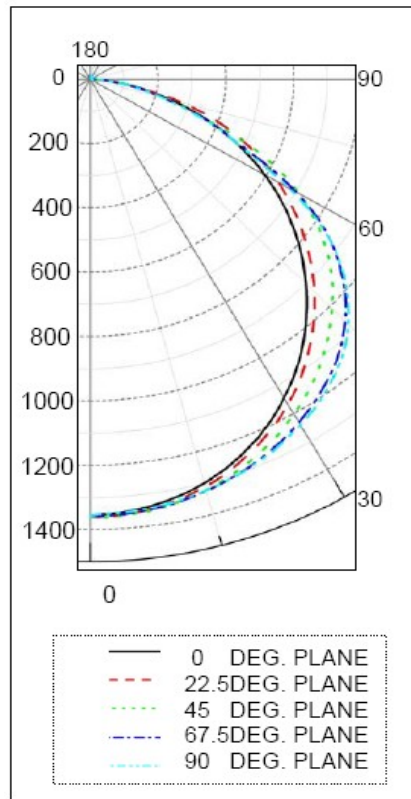
ACCESSORY : _____

| APPROVED SIGNATURES | | |
|---------------------|------------------|----------|
| QUALITY DEPT | ENGINEERING DEPT | PRODUCER |
| | | |

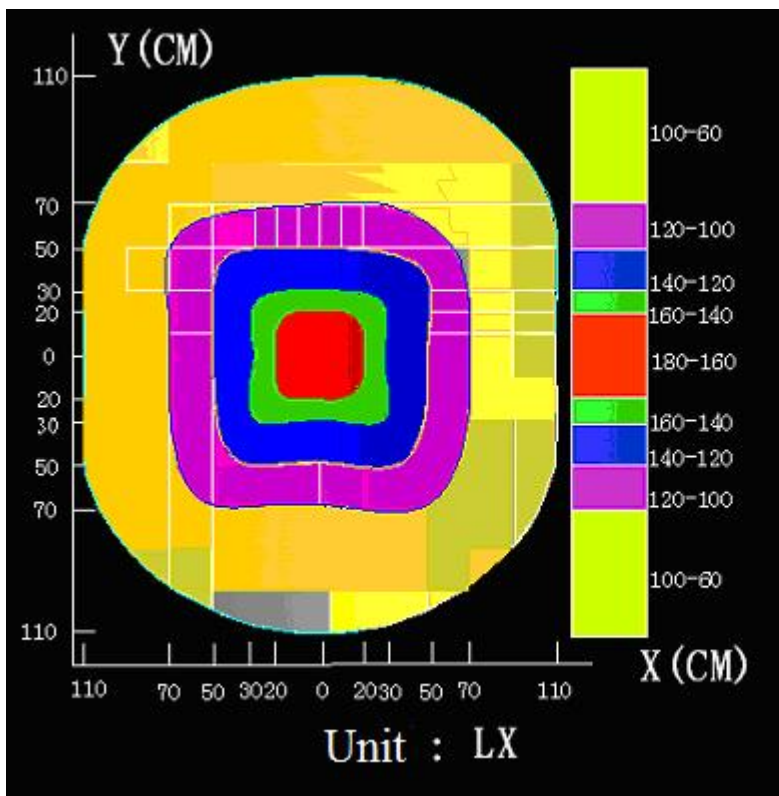
TECHNICAL SPECIFICATIONS(T=20°C)

| NUMBER | ITEM | DESCRIPTION |
|--------|------------------------|----------------------------------|
| 01 | Input Power | AC 100~240V |
| 02 | Operating voltage | 24v |
| 03 | Output Current(max) | 1.41A |
| 04 | Luminous Flux | 2000LM |
| 05 | Color | White/Blue/Red/Orange/Warm-white |
| 06 | Color Temperature | 6500±300K/4500K/3500 |
| 07 | Life time | >50,000 Hours |
| 08 | Operating Temperature | -20°C to +60°C |
| 09 | Storage Temperature | -20°C to +85°C |
| 10 | Humidity Operating | 10-99% |
| 11 | Humidity Storage | 10-99% |
| 12 | Brightness | 700lx (in 1 meter) |
| 13 | Power Consumption | 38W |
| 14 | Certifications | CE |
| 15 | Weight | 6KG |
| 16 | Size of the panel | 595*595*15 MM |
| 17 | Installation size | 600*600mm |
| 18 | Illuminating dimension | 587*587 MM |

Light Distribution Curve



Illumination Intensity Chart

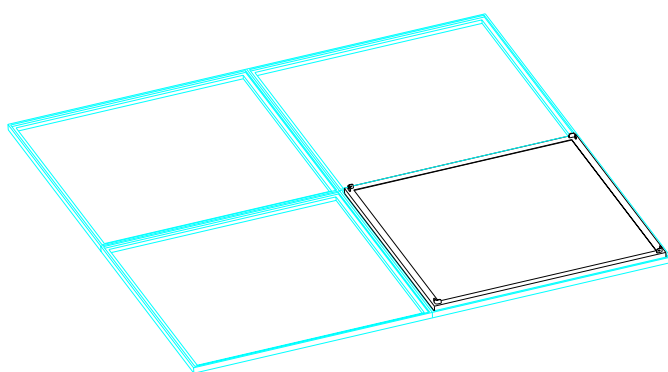


LEDs Lumen Attenuation:

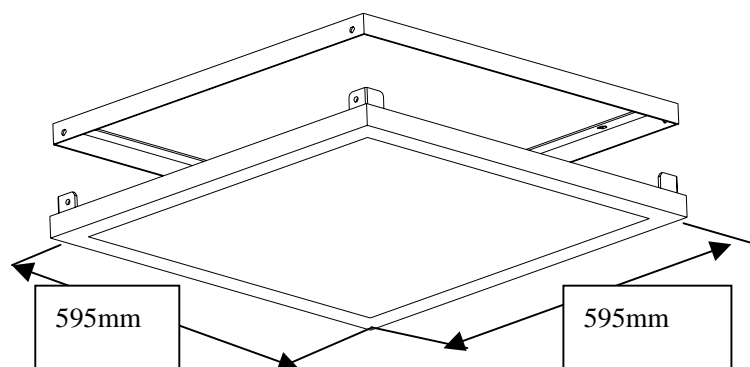
| Operating time(hours) | Lumen decrease(%) |
|-----------------------|-------------------|
| 5,000 | 2.4 |
| 10,000 | 5.2 |
| 20,000 | 11.3 |
| 50,000 | 24.5 |

Instructions of installation

1.



2.



1. All dimension units are millimeters.
2. All dimension tolerance is $\pm 0.5\text{mm}$ unless otherwise noted.

Packing

Inner Carton : 628*614*50.5mm (2pcs/carton)

N-W: 6kg /pcs

Quantity: 2PCS/CTN