



---

# **KTL SOFTWARE DIRECTOR & MONITOR Quick Installation Guide**

Document Version 1.0.0  
August 2004

---

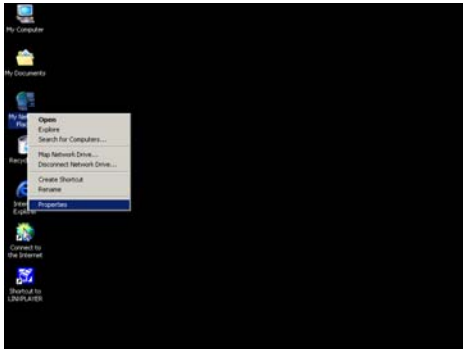
KTL Software Copyright 2004



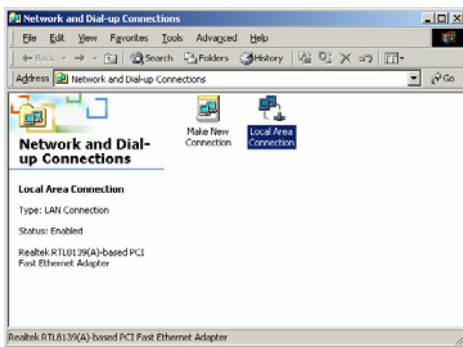
## Console Quick Installation Guide

### Part A. Setup the TCP/IP

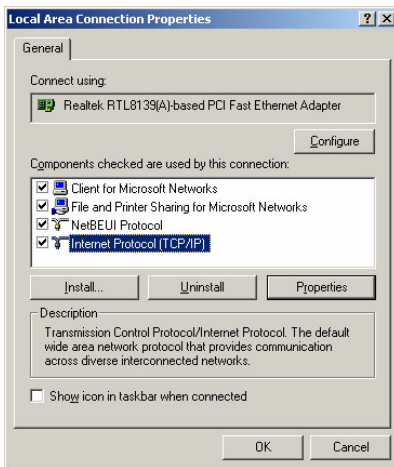
Right click the “Network Neighborhood” on the desktop and then select the [Properties].



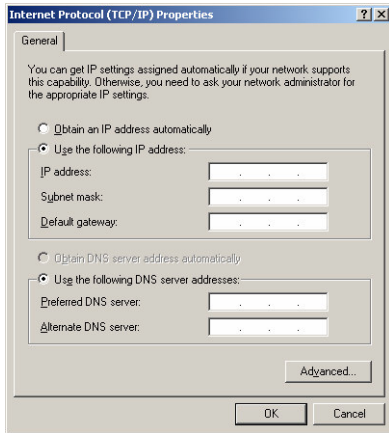
Right click the “Network Connection” and then select the “Properties”.



Select the “Internet Protocol (TCP/IP)” and then click the [Properties] button.



Change the IP address and subnet mask accordingly.

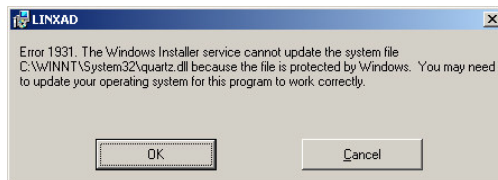


### Part B. DDS Console Program installation.

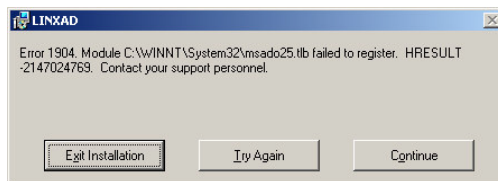
1. Double click the [Director] installation file in the setup package folder.



Click [OK] to skip the error message.



Click [Continue] to skip the error message.

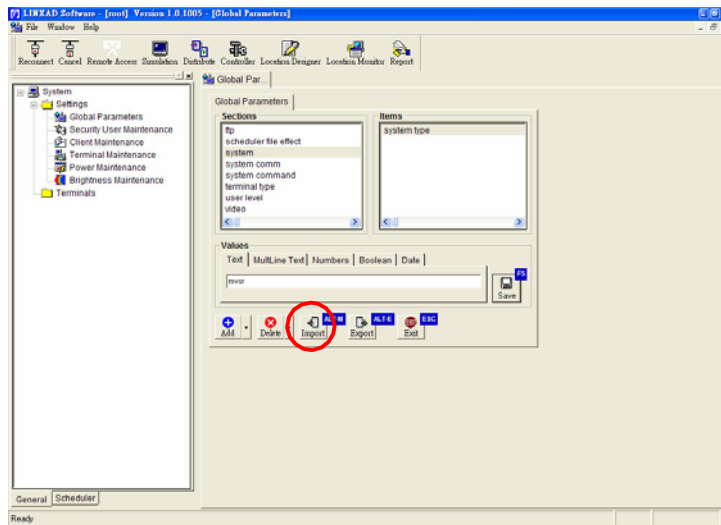


## Part C. Parameter Settings

### 1. Import the “Config File”.

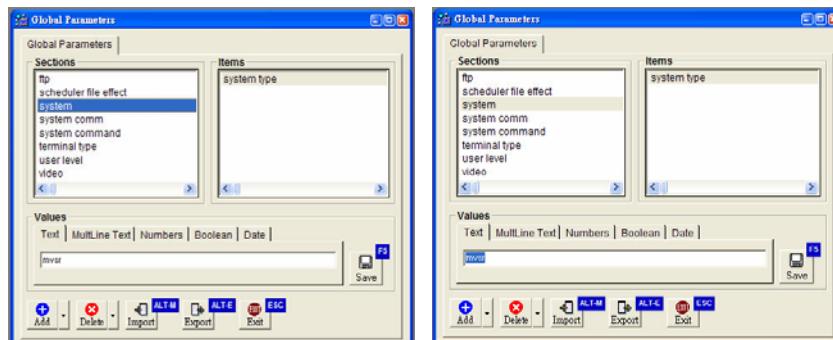
In Settings > Global Parameters > Click the [Import] button to import the “JS×××.cfg” configuration file to reload the dimension and position of the display board.

After this button is clicked, users should click [Controller], then [Set Screen Configuration], follow by [Save Setting] to restore the new display settings.



### 2. Set the System Type to mvsr.

In Settings > Global Parameters > System, change the parameter to **mvsr** by key in method and then click [Save] button.





## Part D. QuickTime Player Installation

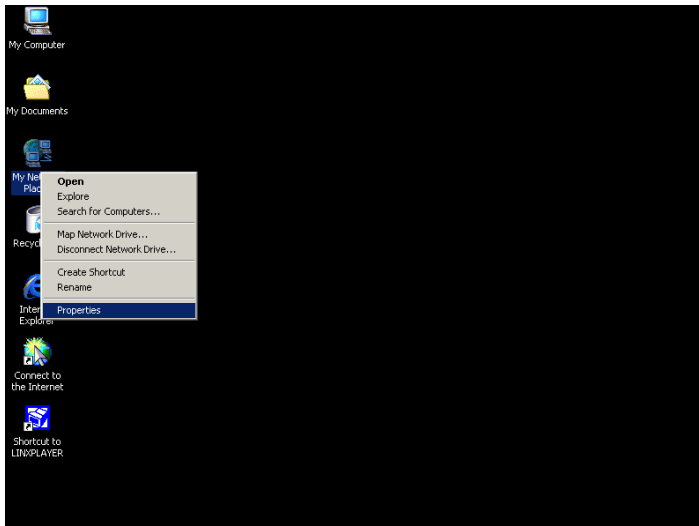
Double click the Quick Time Full Installer icon to install the Quick Time Player program in order to play the MPEG and AVI files at Console PC (Install the same program at Terminal PC).



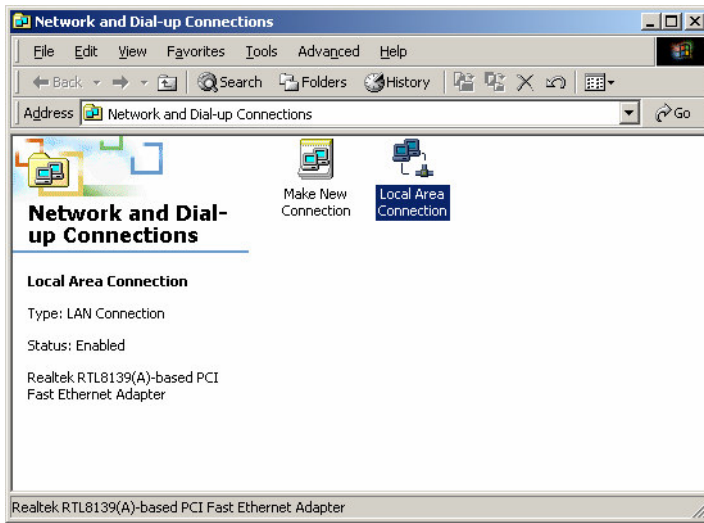
## Terminal Quick Installation Guide

### Part A. Setup the TCP/IP

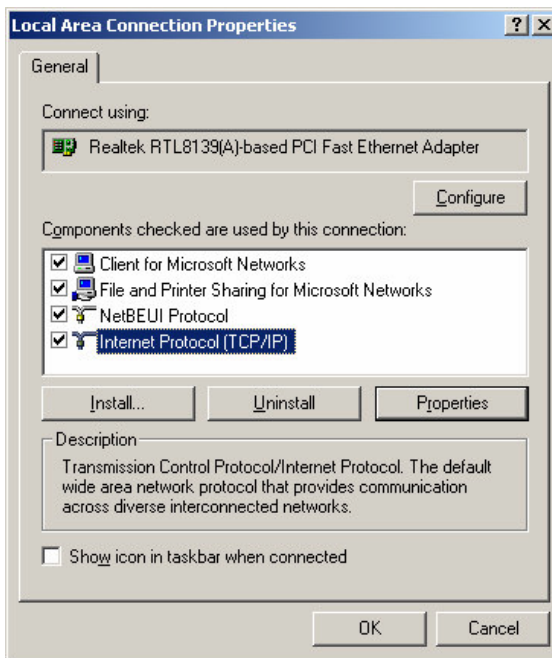
Right click the “Network Neighborhood” on the desktop and then select the [Properties].



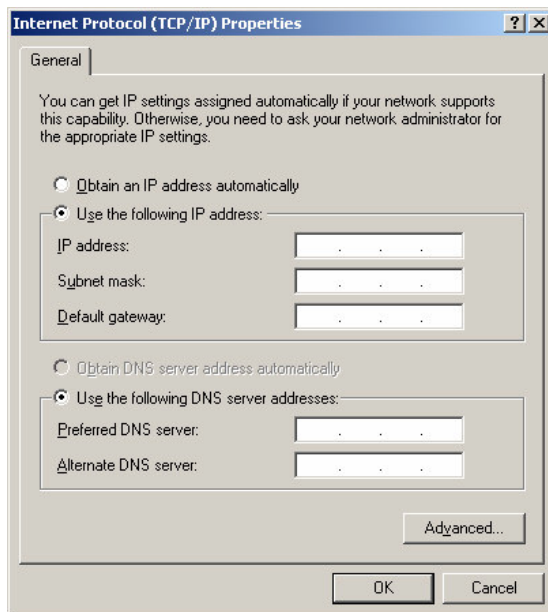
Right click the “Network Connection” and then select the “Properties”.



Select the “Internet Protocol (TCP/IP)” and then click the [Properties].



Change the IP address and subnet mask accordingly.

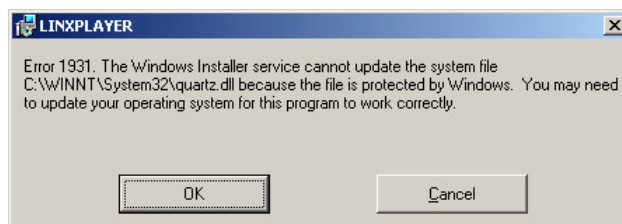


## Part B. DDS Terminal Program installation.

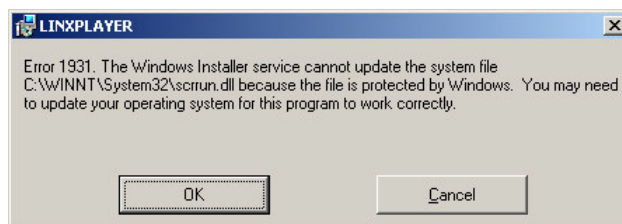
1. Double click the [Player] installation file in the setup package folder.



Click [OK] to skip the error message.



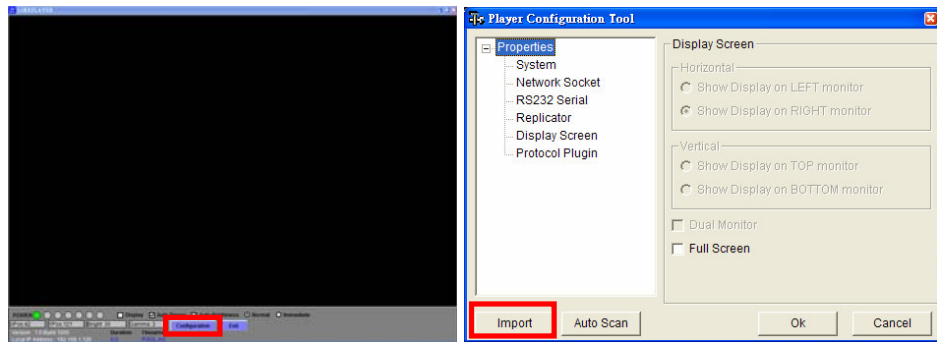
Click [OK] to skip the error message.



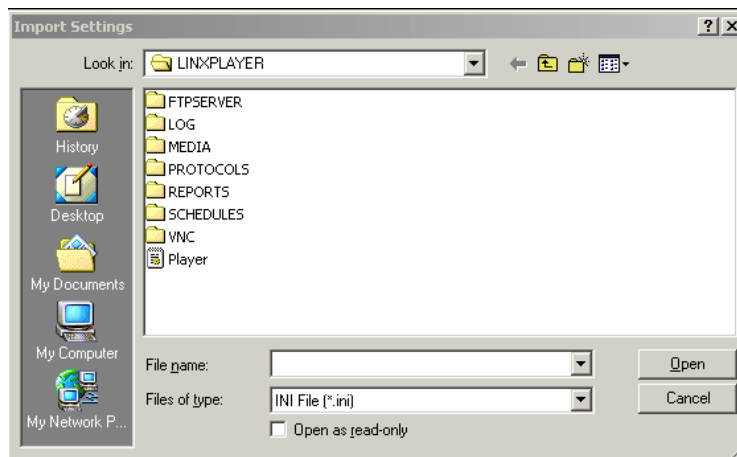
## Part C. Parameter Settings

### 1. Import the “INI File”.

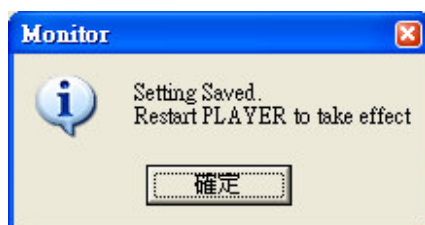
Click the [Configuration] button and the [Import] icon, the Import Settings dialog will be shown.



Select the “Player.ini” file and then click the [Open] button, the default terminal configuration will then be applied.

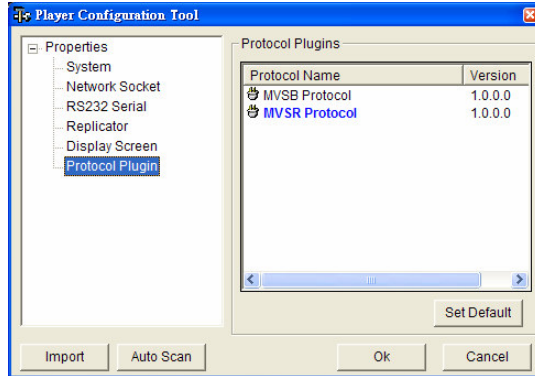


There will be a setting saved confirmation dialog shown and request for terminal restarting. Click [OK] to close this dialog and then reset the terminal software to restore the new settings.



## 2. Set the Default protocol to **MVSR**.

Click the [Configuration] button and then the [Protocol Plugin]. Select the **MVSR Protocol** on the right side and then click the [Set Default] button to change.

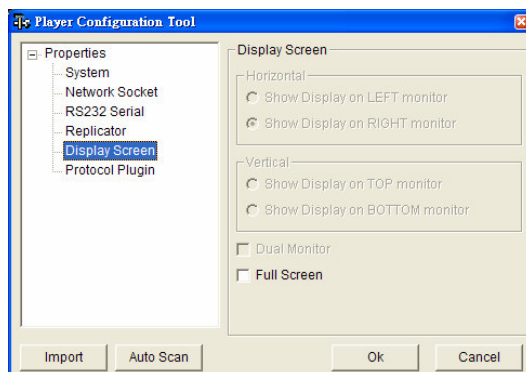


Click [OK] to close this dialog and then reset the terminal software to restore the new settings.



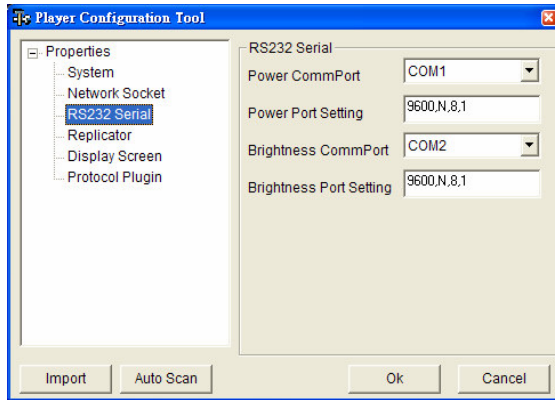
## 3. Display Screen

Un-tick the check box of the Full Screen, the terminal display will be shown in full screen.

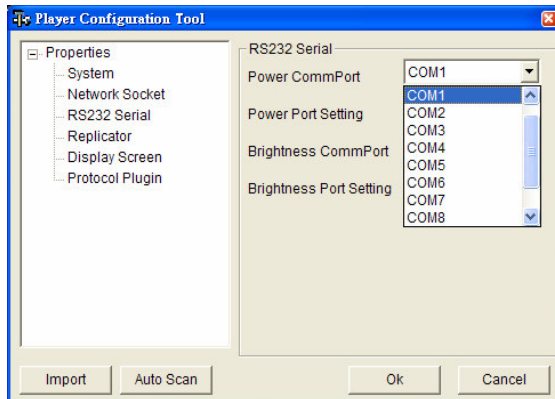


4. Power / Brightness Control COM Port setting.

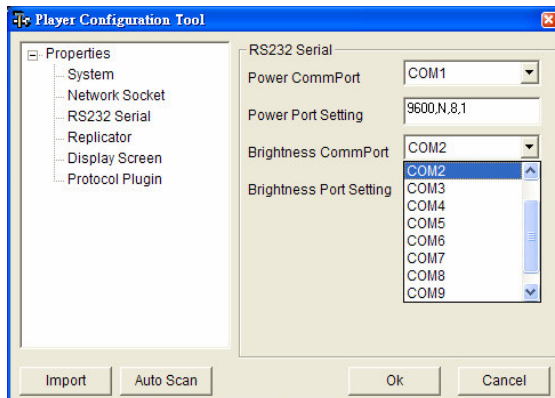
Click the [Configuration] button and then select the [RS232 Serial].



Select the Power Control COM Port setting on the right side, the default setting is COM1.



Select the Brightness Control COM Port setting on the right side, the default setting is COM2.



## Part D. Additional Programs Installation

Double click the icons to install the four programs inside the “Plugins” folder.

